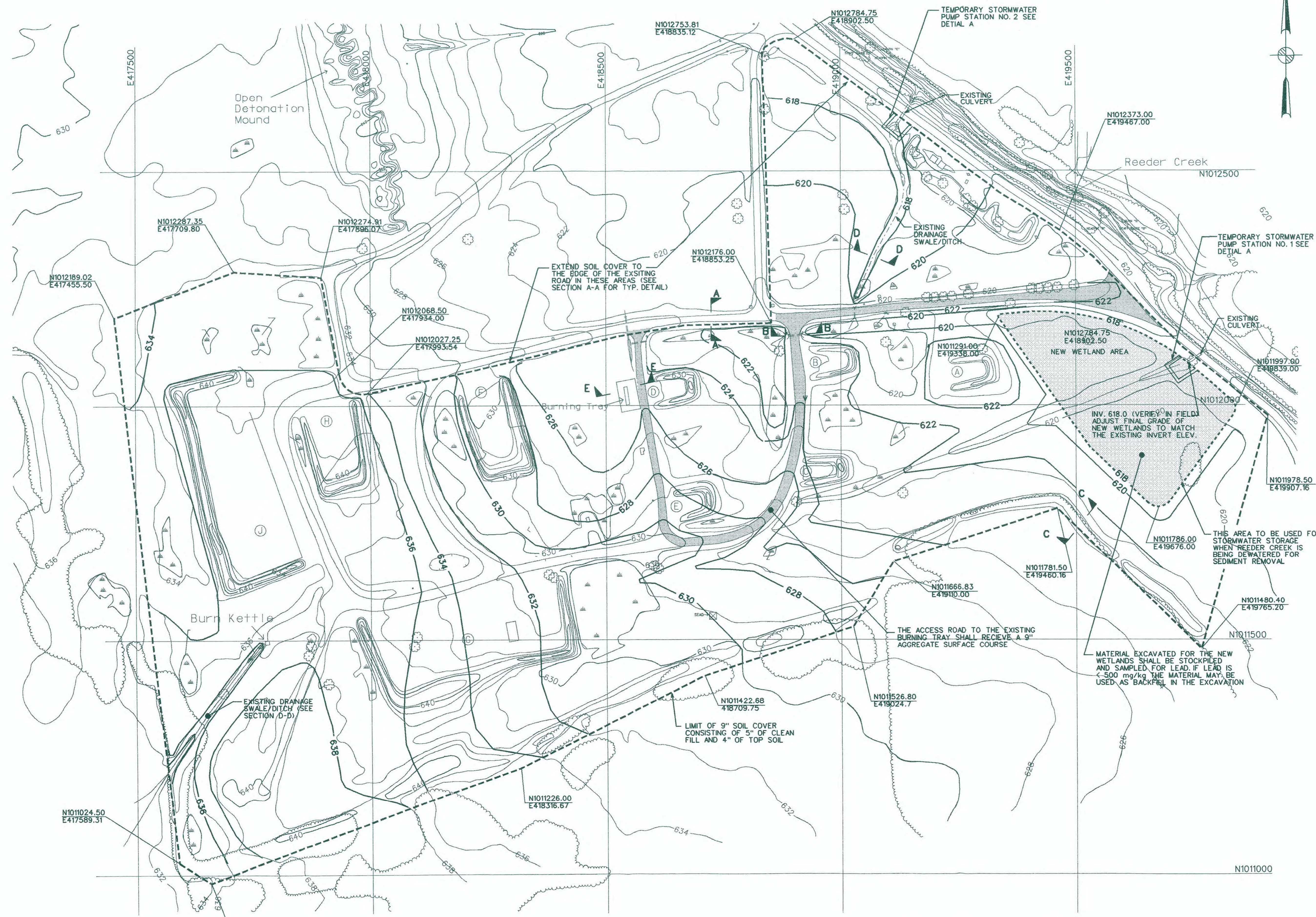


NOTES:

1. THE FINISHED GRADE CONTOURS SHOWN ON THE GRADING PLAN SHOULD BE USED AS A GUIDE. THE FINAL GRADES SHOULD BE ADJUSTED BASED ON FIELD CONDITIONS TO MINIMIZE EARTH WORK AND BALANCE THE CUT AND FILL AT THE SITE.
2. ALL SOILS WITH LEAD > 500mg/kg SHALL BE REMOVED THIS VOLUME MAY CHANGE BASED ON CONFIRMATION SAMPLING.
3. THE 9 INCH SOIL COVER SHALL COVER ALL AREAS WITH LEAD > 60mg/kg. THIS AREA MAY CHANGE BASED ON CONFIRMATION SAMPLING. ALL MATERIAL USED IN THE 9 INCH COVER SHALL COME FROM CLEAN OFF SITE SOURCE.
4. ROUGH GRADING OF THE SITE SHALL BE LIMITED TO THAT REQUIRED TO IMPLEMENT DETAILS A-A, B-B, C-C, D-D AND E-E OR AS REQUIRED TO SPREAD ANY EXCESS MATERIAL (SOIL W/ LEAD < 500mg/kg) EXCAVATED FROM THE SITE BY FOOT OR WESTIN. NO OFF SITE MATERIAL WILL BE USED TO COMPLETE THE ROUGH GRADING. FINISHED GRADES SHALL BE ADJUSTED AS REQUIRED TO MEET THIS REQUIREMENT.
5. THE ROD REQUIRES A 9 INCH COVER. ADDITIONAL SOIL COVER MAY BE REQUIRED TO MEET THE DOD'S UXO CLEARANCE CRITERIA. THE FINAL DOD UXO CLEARANCE CRITERIA SHALL BE REVIEWED BY THE CONTRACTOR AND OWNER TO ESTABLISH ANY REQUIRED CHANGES IN THE COVER DESIGN.
6. THE ROUGH AND FINAL GRADING REQUIREMENTS COULD BE SIGNIFICANTLY AFFECTED BY THE DOD UXO CLEARANCE REQUIREMENTS. THE CONTRACTORS WORK PLANS SHALL DESCRIBE HOW THE FINAL UXO CLEARANCE REQUIREMENTS WILL BE MET WHILE STILL BALANCING THE SITE'S CUT AND FILL. FOR EXAMPLE IF DOD REQUIRES A FOUR FOOT COVER CONSISTING OF A 1 FOOT OF COVER, 2 FEET OF SCREENED SOIL AND 1 FOOT SOIL THAT HAS BEEN SCANNED IN PLACE FOR UXO. THEN THE CONTRACTORS WORK PLAN WILL HAVE TO INCLUDE PROCEDURES THAT ASSURE THAT THIS CRITERIA IS MET WHILE STILL MINIMIZING THE USE OF OFF SITE MATERIAL.



LEGEND:

- EDGE OF SOIL COVER
- NEW CONTOUR AND ELEVATION
- BURNING PAD DESIGNATION
- EXISTING CONTOUR AND ELEVATION
- WETLAND
- UTILITY POLE
- TREE
- BRUSH

B	8/11/98	ISSUED FINAL							
A	5/11/98	ISSUED FOR REVIEW							
REV	DATE	DESCRIPTION							
DRAWN BY		CHECKED BY		DRAWN		CHECKED			
T. DIORIO		P. MESSELAAR							
DESIGN SUPV.		RESP. ENGR.							
CHIEF DISC. ENGR.		MGR. OF ENGR.							
PROJECT MANAGER		M. DUCHESNEAU							
MGR. OF PROJECTS									
IN CHARGE									

PARSONS
PARSONS ENGINEERING SCIENCE, INC.

CLIENT/PROJECT TITLE
SENECA ARMY DEPOT ACTIVITY
 SECTION C-REMEDIAL DESIGN
 OPEN BURNING GROUNDS

DEPT. ENVIRONMENTAL ENGINEERING Dwg. No. 732598-01

FIGURE 26
FINAL GRADING PLAN
 00443-M1

SCALE 1"=100' DATE AUGUST 11, 1998 REV B



18-AUG-1998 14:02

z:\net\fig26.dgn