

104-33

Seneca Army Depot

Installation Overview

by

Stephen M. Absolom

SEDA HISTORY



Built in 1941

- o \$8 million Investment
- o \$850 million Replacement

SENECA ARMY DEPOT MISSION



"Closure"

SENECA ARMY DEPOT MISSION ACTIVITY - CURRENT

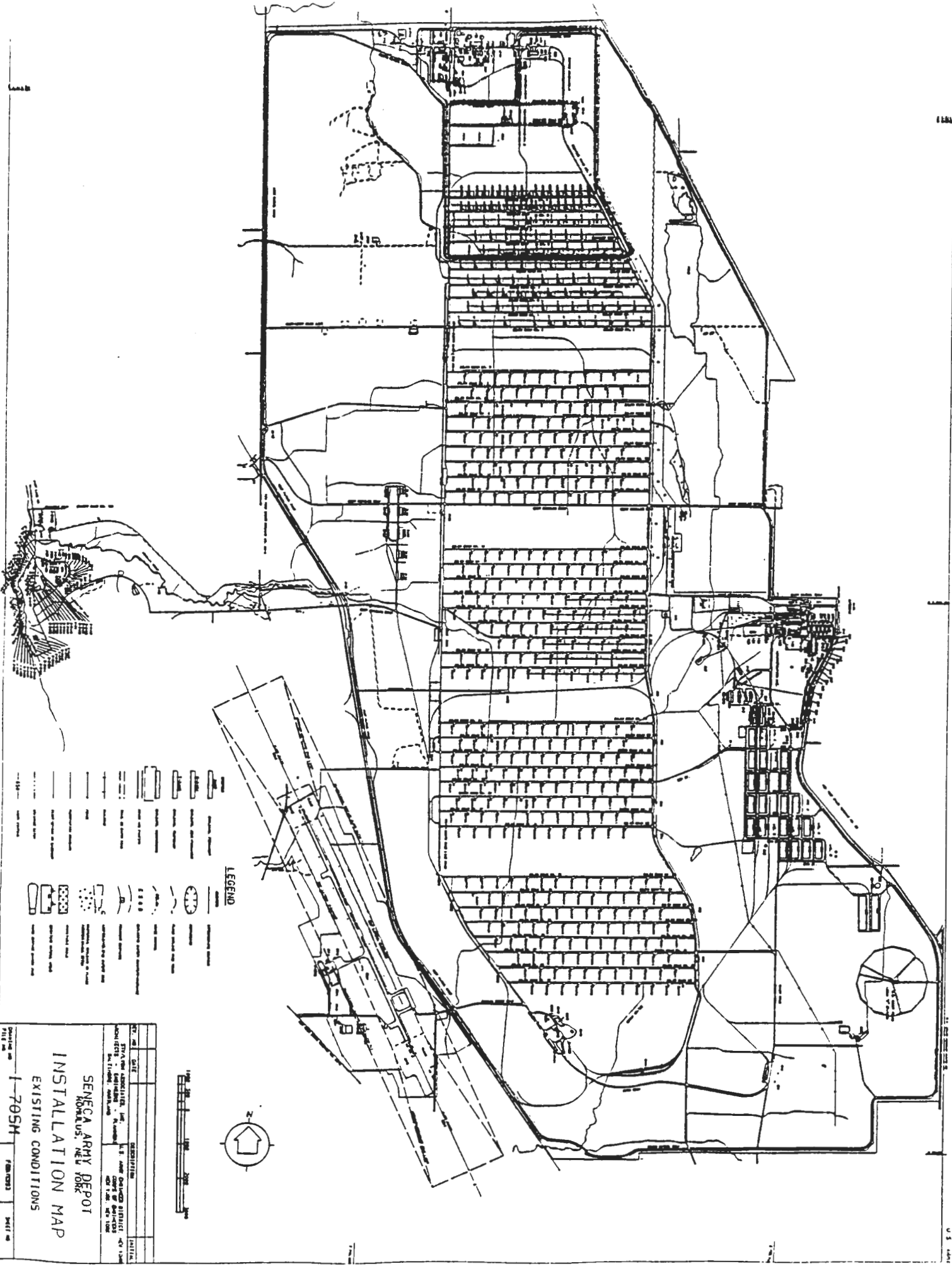
- ✓ Conventional Ammunition Storage
- ✓ Storage of Industrial Plant Equipment
- ✓ Storage of Hazardous Material
- ✓ Strategic Ores

SENECA ARMY DEPOT MISSION ACTIVITY - PREVIOUS

- ✓ Special Weapons
- ✓ IPE Rebuild
- ✓ General Supplies

SENECA ARMY DEPOT POST CLOSURE MISSION ENCLAVE

- ✓ Storage of DS-2
- ✓ Storage of Strategic Ores
- ✓ 23-Person
- ✓ 3 Warehouses
- ✓ 1 Administrative Building



LEGEND

- [Symbol] Existing Buildings
- [Symbol] Proposed Buildings
- [Symbol] Existing Roads
- [Symbol] Proposed Roads
- [Symbol] Existing Utility Lines
- [Symbol] Proposed Utility Lines
- [Symbol] Existing Parking Areas
- [Symbol] Proposed Parking Areas
- [Symbol] Existing Fences
- [Symbol] Proposed Fences
- [Symbol] Existing Ditches
- [Symbol] Proposed Ditches
- [Symbol] Existing Water Features
- [Symbol] Proposed Water Features
- [Symbol] Existing Easements
- [Symbol] Proposed Easements
- [Symbol] Existing Right-of-Way
- [Symbol] Proposed Right-of-Way
- [Symbol] Existing Survey Lines
- [Symbol] Proposed Survey Lines
- [Symbol] Existing Property Lines
- [Symbol] Proposed Property Lines



SYMBOL	DESCRIPTION	DATE
[Symbol]	EXISTING BUILDINGS	
[Symbol]	PROPOSED BUILDINGS	
[Symbol]	EXISTING ROADS	
[Symbol]	PROPOSED ROADS	
[Symbol]	EXISTING UTILITY LINES	
[Symbol]	PROPOSED UTILITY LINES	
[Symbol]	EXISTING PARKING AREAS	
[Symbol]	PROPOSED PARKING AREAS	
[Symbol]	EXISTING FENCES	
[Symbol]	PROPOSED FENCES	
[Symbol]	EXISTING DITCHES	
[Symbol]	PROPOSED DITCHES	
[Symbol]	EXISTING WATER FEATURES	
[Symbol]	PROPOSED WATER FEATURES	
[Symbol]	EXISTING EASEMENTS	
[Symbol]	PROPOSED EASEMENTS	
[Symbol]	EXISTING RIGHT-OF-WAY	
[Symbol]	PROPOSED RIGHT-OF-WAY	
[Symbol]	EXISTING SURVEY LINES	
[Symbol]	PROPOSED SURVEY LINES	
[Symbol]	EXISTING PROPERTY LINES	
[Symbol]	PROPOSED PROPERTY LINES	

SENECA ARMY DEPOT
 FORT MONROE, NEW YORK
INSTALLATION MAP
 EXISTING CONDITIONS
 DRAWING NO. I-705M (REVISED) SHEET NO.

SENECA ARMY DEPOT PHYSICAL PLANT

- ✓ 10,600 Acres
- ✓ 143 Miles of Road
- ✓ 42 Miles of Railroad
- ✓ 7,000 Air Strip
- ✓ 938 Buildings

SENECA ARMY DEPOT UTILITY SYSTEMS

- ✓ Electric Distribution
- ✓ Water
- ✓ Sewer
- ✓ Central Steam
- ✓ Communication Systems

SENECA ARMY DEPOT MANPOWER

✓	2,500	-	1943
✓	1,500	-	1992
✓	300	-	1995
✓	178	-	1997
✓	23	-	2001

ENVIRONMENTAL OVERVIEW

- ✓ Compliance Program
- ✓ Restoration Program
- ✓ BRAC

COMPLIANCE PROGRAM

- o Storage Tanks
- o Air Permit
- o Discharge Permits
- o Solid Waste
- o RCRA
- o Drinking Water
- o Asbestos
- o Lead-Based Paint
- o Radon
- o Radiation Licenses

COMPLIANCE PROGRAM - TANKS

- ✓ Petroleum Storage
 - o Fuel Oil
 - o Used Oil
 - o Gasoline
 - o Heating

- ✓ Above Ground Storage Tanks - 75
 - o Regulated - 16
 - o Unregulated - 59

- ✓ Underground Storage Tanks - 141

COMPLIANCE PROGRAM - AIR

- ✓ Point Sources - 21
 - o Boiler Houses
 - o Paint Booth
 - o Sandblast Booths
 - o Incinerators

- ✓ Title V Permit

COMPLIANCE PROGRAM - DISCHARGE PERMITS

- ✓ 2 Sewage Treatment Plants
 - STP 715 .375 MGD
Tertiary Treatment
 - STP 4 .250 MGD
Wetlands - Tertiary Treatment

COMPLIANCE PROGRAM - SOLID WASTE

- ✓ Municipal Garbage - 288 ton
- ✓ Industrial Waste - 1.25 ton
- ✓ Recycling - 24 ton

COMPLIANCE PROGRAM - RESOURCE RECOVERY CONSERVATION ACT (RCRA)

- ✓ TSD Facility
 - o 3 Storage Areas
 - o 2 Treatment Units
 - Open Burning Ground
 - Open Detonation
 - o 1 Hazardous Waste Incinerator
 - Small Arms Deactivation Furnace

- ✓ Interim Status Until Closure

- ✓ Disposal - CY96 - 31.2 tons

COMPLIANCE PROGRAM - DRINKING WATER

- ✓ Municipal Water Supplier
 - o Seneca Army Depot
 - o Town of Romulus
 - o Sampson State Park

- ✓ Notice of Violation
 - o Non-Compliance with Safe Drinking Water Act
 - o Federal Facilities Compliance Agreement
 - o Multi-municipality Solution

COMPLIANCE PROGRAM - ASBESTOS

- ✓ 215 Buildings with Asbestos Containing Material
 - o 35 Active
 - o 180 Inactive

- ✓ Asbestos Removal Team

- ✓ Asbestos Abatement Contracting

COMPLIANCE PROGRAM - LEAD-BASED PAINT

- ✓ 855 Buildings Built pre-1978

- ✓ LBP Interior Family Housing Unit

- ✓ LBP Exterior of Family Housing Units
 - Chipped and Flaking
 - Presidio Issue

COMPLIANCE PROGRAM - RADON

- ✓ 303 Buildings Surveyed

- ✓ 2 Elevated Results
 - o 1 - Lake Housing Quarter - 2.9-4.0 pCi/L
 - o 1 - Office, Bldg 115 - 5.5-7.3 pCi/L

COMPLIANCE PROGRAM - RADIATION

- ✓ 5 Licenses at Seneca
 - o Ammunition
 - o Laboratory Sources
 - o Weapon and Components

RESTORATION PROGRAM - HISTORY

- ✓ USATHAMA Review - 1980
- ✓ Ash Landfill
- ✓ OB/OD Operations
- ✓ Deactivation Furnaces
- ✓ Good Neighbor Effort
 - o Groundwater Monitoring

RESTORATION PROGRAM - HISTORY (continued)

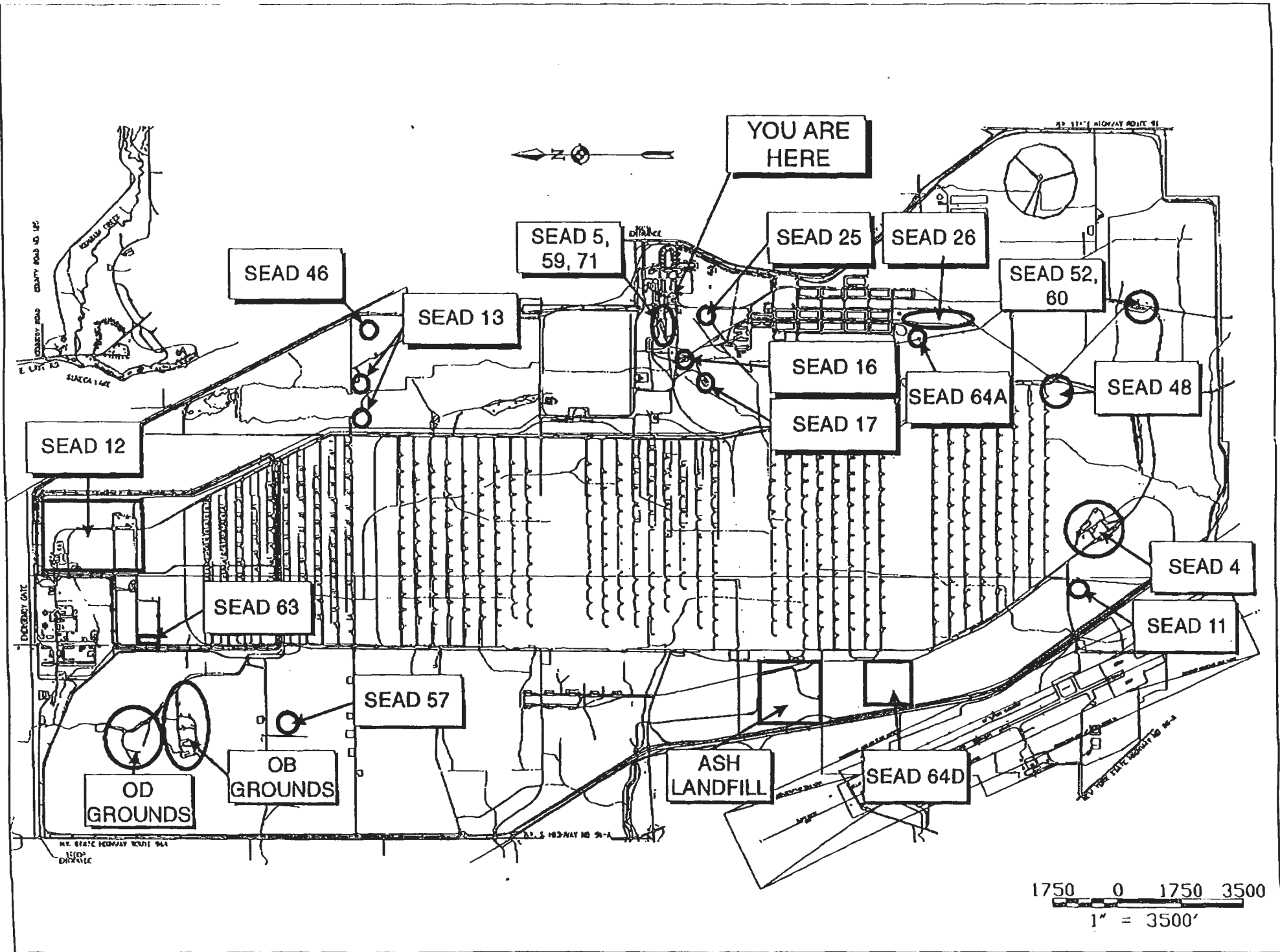
- ✓ National Priority List - 1989
 - o 3 Sites
 - Ash Landfill
 - OB/OD Grounds
 - Deactivation Furnace
 - o Hazard Ranking Score - 37.3
 - o Installation Listed

RESTORATION PROGRAM - HISTORY (continued)

- ✓ Federal Facilities Agreement
 - o Signed 1993
 - o 3-Party Agreement
 - o Incorporated RCRA Corrective Action
 - o Identified
 - Sites
 - Schedules
 - Procedures

RESTORATION PROGRAM - HISTORY (continued)

- ✓ Solid Waste Management Unit
 - o Classification Report - 1994
 - o 72 Identified Sites
 - 24 Regulated by Other Programs
 - 48 Required Additional Action



MAR - 27 - 57 16:21 FROM: PARKSONS ENS. 507. ENS.

1750 0 1750 3500
1" = 3500'

RESTORATION PROGRAM - STATUS

- ✓ Expanded Site Investigations
 - o High Priority
 - o Medium Priority
 - o Medium Low Priority
 - o Low Priority

- ✓ RI/FS
 - o Ash Landfill
 - o OB Grounds
 - o Fire Training Areas
 - o Deactivation Furnaces
 - o Radiation Site 12/63
 - o Sludge Pile 59/71

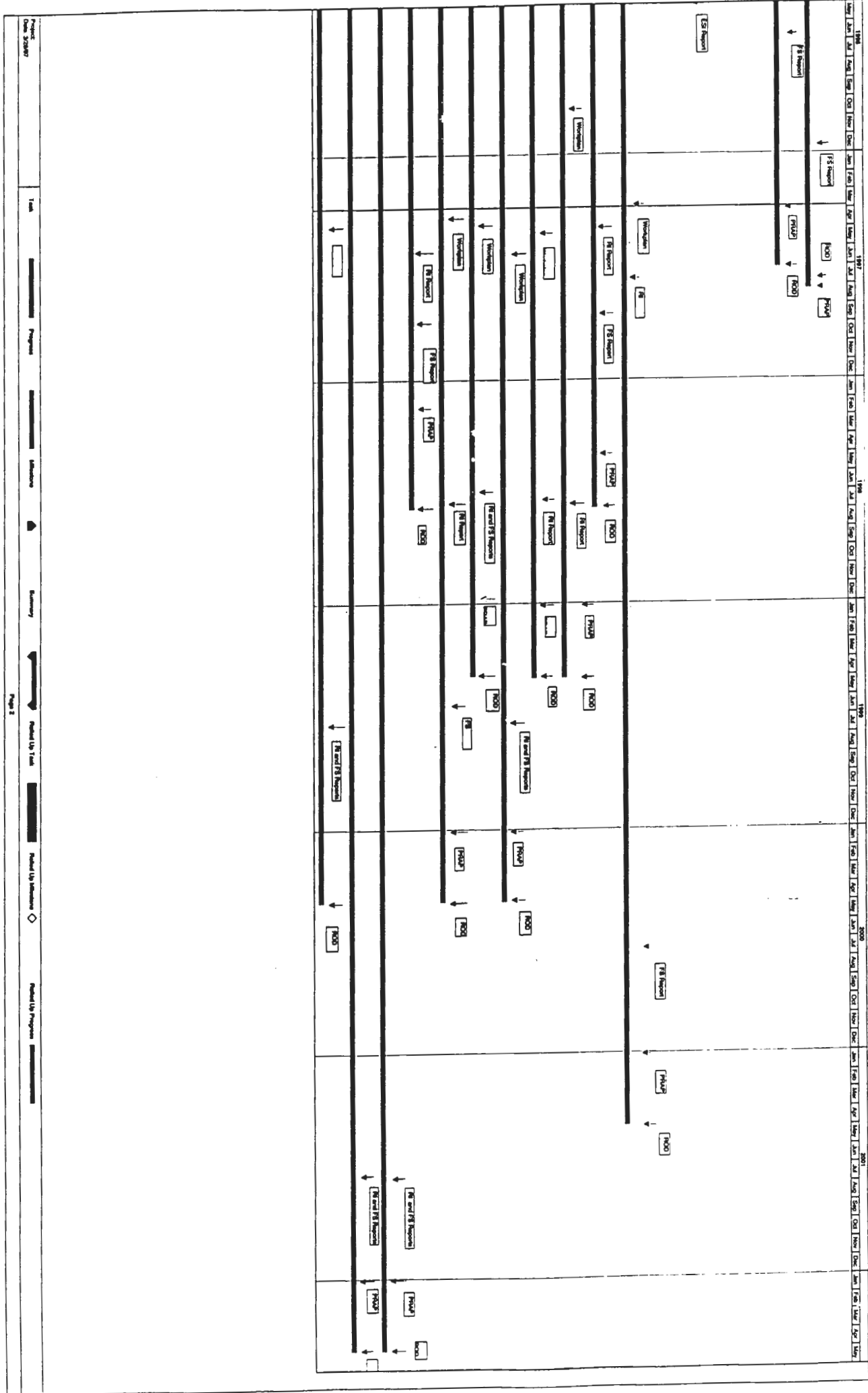
RESTORATION PROGRAM - STATUS

- ✓ Project Schedule
 - o FFA
 - o Relative Risk
 - o Reuse

- ✓ Timeline Chart

Item	Task Name	1991	1992	1993	1994	1995	1996	1997	1998	1999	2000	2001	2002	2003	2004	2005	2006	2007	2008	2009	2010	
1	SWMI Classification Report																					
2	Ash Landfill (SEADs-3,6,8,14,15)																					
3	OB Grounds (SEAD-23)																					
4	Expanded Site Inspection - 7 High Priority																					
5	Expanded Site Inspection - 3 Moderate Priority																					
6	Expanded Site Inspection - 7 Low Priority																					
7	Expanded Site Inspection - 8 Mod. Low Priority																					
8	Munitions Destruction Areas (SEADs-45,46,57)																					
9	Deactivation Furnaces (SEADs-16,17)																					
10	Munitions Washout Facility (SEAD-4)																					
11	Sludge Piles (SEADs-5, 59, 71)																					
12	Building 612 Complex (SEADs-52,60)																					
13	Radiation Sites (SEADs-12, 63)																					
14	IRFNA Disposal Site (SEAD-13)																					
15	Fire Training Areas (SEADs-25, 26)																					
16	Punch Blends Storage (piles) (SEAD-48)																					
17	Pesticide Storage Areas (SEAD-66)																					
18	Old Construction Debris Landfill (SEAD-11, 64A, 64D)																					





Project: Data 2000

Task: []

Program: []

Windows: []

Summary: []

Page 2

RESTORATION PROGRAM - STATUS



Stakeholder Involvement

- o Technical Review Committee -
1992 to 1996
- o Restoration Advisory Board -
1996 to Present
- o Public Meetings
- o BRAC Cleanup Team Support Staff

SENECA INITIATIVES

TO

CONTROL COST

COST CONTAINMENT

- ✓ Cost to Complete \$113 million

- ✓ Environmental Program Requirements
 - o Restoration \$151 million
 - o BRAC \$ 29 million

- ✓ Room to Save

COST CONTAINMENT INITIATIVES TAKEN

- ✓ Agency Review
 - o AEC
 - o USACHPPM
 - o USCOE - Huntsville
 - o USCOE - MRD
 - o USCOE - New York
 - o HQ IOC
 - o DoD Explosive Safety Board

MISSOURI RIVER DIVISION

- ✓ Center of Expertise for Site Restoration
 - Risk Assessment
 - Chemistry
 - GeoTechnical Review
 - Cost Estimating
 - ARAR Review

- ✓ Chemical Analysis
 - Laboratory QC/QA
 - Contractor Quality Assurance Report

Health Protective

- USAHPPM is a medical organization assigned the responsibility of protecting the health of US Army resources.
 - Preventive Medicine
 - Patient Care
 - Quality of Life
 - Environmental Preservation

Surgeon General Approval

All risk assessments are required
to have the approval of the
Office of the Surgeon General
prior to the signing of the ROD

USACHPPM Review Overview

- Required for Surgeon General Approval
- Designed to be Protective of Health
 - Human Receptors
 - Ecological Receptors
- Multidiscipline/Matrixed
- Project Life Review

Multidiscipline/Matrixed

USACHPPM uses a variety of disciplines to accomplish its reviews

- Environmental Physicians
- Engineers
- Geologists
- Chemists
- Hydrologists
- Limnologists
- Meteorologists
- Toxicologists
- Ecologists
- Biologists
- Soil Scientists
- Lawyers
- Entomologists
- Water and Air Pollution Scientists

Project Life Review

- USACHPPM is involved with the entire life of the project. Project review begins with the scoping or pre-scoping and continues through the Record of Decision

COST CONTAINMENT INITIATIVES TAKEN (continued)

- ✓ Generic Work Plan
- ✓ Scoping Documents
- ✓ Site Combination
- ✓ Combine Removal Projects
- ✓ Consistent Team
 - o Corporate Knowledge Base
- ✓ RCRA Corrective Action

RI/FS Cost Estimating Guideline

Assumptions

- Used to Expedite RI/FS Cost Proposal Estimating
- Intended to Serve as the Basis for Fair and Reasonable Costs for Cost Plus Fixed Fee (CPFF) Contract
- Modified as Required for Individual Delivery Order but is Used as Starting Point for Negotiations
- Based Upon "Lessons Learned" from First Two RIs Performed in 1992 and 1993
- Similar in Concept to Unit Cost Basis, Currently Used for Laboratory Subcontracting
- All Encompassing Cost, Includes :
 - Mobilization and Demobilization of Field Equipment
 - Health and Safety Monitoring
 - Decontamination
 - IDW Tracking and Disposal
 - Subcontractor Bidding and Selection

Cost Estimating Guidelines, Seneca Army Depot

RI/FS Cost Estimating Guideline

Assumptions

- Each Effort Involves 2.5 Person Crew, Unless Otherwise Noted
- Geophysical Surveys
 - EM-31 3300 lf per day (1 Person)
 - GPR 2000 lf per day (2 Persons)
- Soil Gas Sampling
 - 15 Points per day
- Microwell Sampling
 - 10 Points per day
- Surficial Soil Sampling
 - 20 Samples per day
- Surface Water and Sediment Sampling
 - 4 Samples per day

MAR-31-97 12:33 FROM: PAKSUNG ENO. TO: LINDA

RI/FS Cost Estimating Guideline

Assumptions (Continued)

- Test Pits (includes Soil Sampling)
 - 2 per day
- Soil Borings (Continuous Sampling)
 - 2 per day
- Monitoring Wells (Includes Continuous Soil Sampling)
 - Shallow Overburden Well - 1 per day
 - Bedrock Well - 1 per 2 days
- Monitoring Well Sampling
 - 2 per day
- Aquifer Characterization (Slug Testing)
 - 4 per day

MAR-31-97 12:34 FROM: PAKSUNS ENG. SCIENCE

COST CONTAINMENT FUTURE EFFORTS

- ✓ Consistent Funding
- ✓ Generic Risk Assessment
- ✓ Generic Cleanup Numbers
- ✓ Convert Deactivation Furnace
for on-site Treatment
- ✓ Continued Regulatory Partnering

BRAC ENVIRONMENTAL BASELINE STUDY

- ✓ Environmental Relook - March 1997
- ✓ 8,600 Acres Transferable
- ✓ 1,600 Acres Contaminated
- ✓ 26 New Sites

BRAC - ENVIRONMENTAL IMPACT STATEMENT

- ✓ Closure and Reuse Impacts
- ✓ Conveyances
 - o Encumbered
 - o Unencumbered
- ✓ Intensity Based Methodology
- ✓ Cooperating Agencies
 - o New York State
 - o Seneca County
- ✓ Schedule
 - o Agency Review - May 97
 - o Public Review - Sep 97
 - o Final Record of Decision
- Apr 98

STAFF ASSISTANCE VISIT SENECA'S GOALS

- ✓ Facilitate Cleanup Efforts
- ✓ Validate Projects

