

LEGEND

- INSTALLATION PROPERTY BOUNDARY
- BRAC PARCEL BOUNDARY
- QUALIFIED PARCEL BOUNDARY
- ASPHALT ROAD
- GRAVEL ROAD
- RIVERS, LAKES, PONDS, DITCHES, ETC.
- SMALL POINT SOURCES OF STORAGE OR POSSIBLE CONTAMINANTS
- E0601 FACILITY OUTLINE AND NUMBER

BRAC PARCEL LABEL DEFINITIONS

8(2)PS

CONTAMINATION DESCRIPTION

- PS PETROLEUM STORAGE
- PR PETROLEUM RELEASE OR DISPOSAL
- HS HAZARDOUS SUBSTANCE STORAGE
- HR HAZARDOUS SUBSTANCE RELEASE OR DISPOSAL
- P POSSIBLE (UNVERIFIED)

CATEGORY NUMBER

PARCEL NUMBER

NON-CERCLA ISSUE (QUALIFIED) LABEL DEFINITIONS

8-190-A(P)

QUALIFIERS

- A ASBESTOS
- L LEAD-BASED PAINT
- P PCB
- R RADON
- X LIND AND/OR ORDNANCE FRAGMENTS
- RD RADIONUCLIDES
- P POSSIBLE (UNVERIFIED)

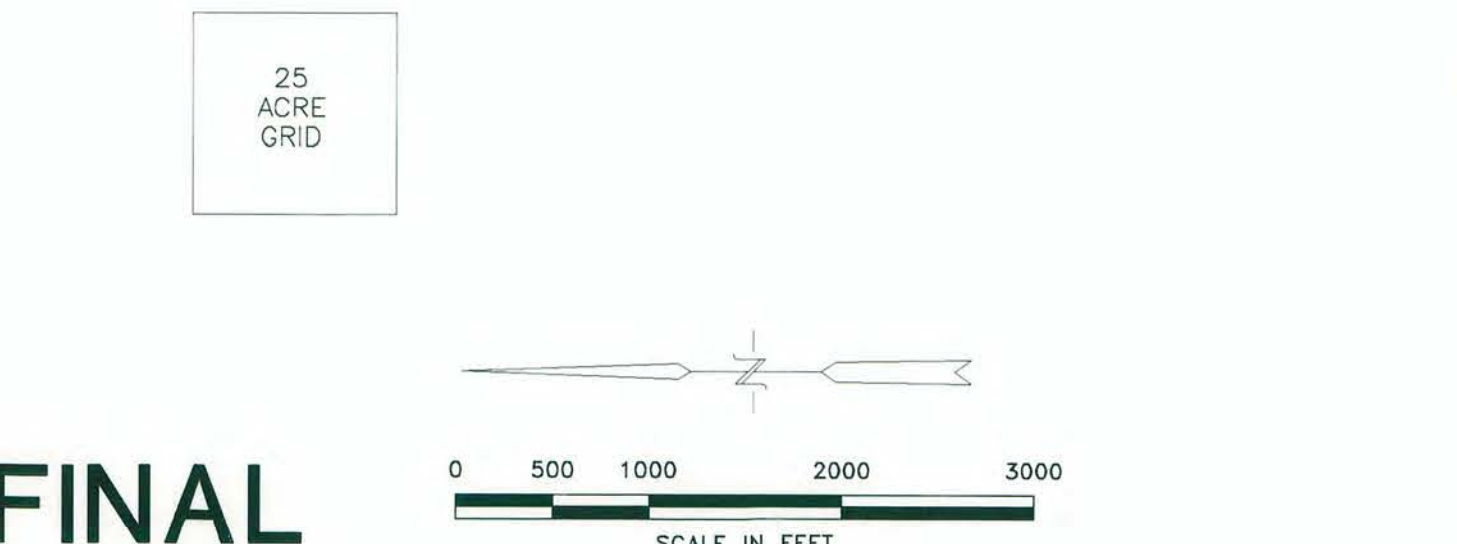
FACILITY NUMBER (IF APPLICABLE)

PARCEL NUMBER

NOTE: QUALIFIED BUILDINGS ARE LISTED WITH LABELS IN TABLE 3-7, THEY ARE SHOWN ON THIS MAP BY BUILDING NUMBER.

CATEGORY DEFINITIONS

CATEGORY NUMBER	COLOR	ENVIRONMENTAL CONDITION OF PROPERTY
1	White	Area where no storage for one year or longer, release, or disposal of hazardous substances or petroleum products has occurred (including no migration of these substances from adjacent properties). Additionally, includes areas where no evidence exists for the release, disposal, or migration of hazardous substances or petroleum products; however, the area has been used to store less than reportable quantities of hazardous substances (40 CFR 302.4) or 600 or fewer gallons of petroleum products.
2	Light Blue	Area where only storage of hazardous substances in amounts exceeding their reportable quantity or petroleum products exceeding 600 gallons has occurred, but no release, disposal, or migration has occurred.
3	Green	Area where storage, release, disposal, or migration of hazardous substances or petroleum products has occurred, but at concentrations that do not require a removal or remedial action.
4	Dark Green	Area where storage, release, disposal, or migration of hazardous substances or petroleum products has occurred, and all removal or remedial actions to protect human health and the environment have been taken.
5	Yellow	Area where storage, release, disposal, or migration of hazardous substances or petroleum products has occurred, and removal or remedial actions are underway, but all required actions have not yet been implemented.
6	Red	Area where storage, release, disposal, or migration of hazardous substances or petroleum products has occurred, but required removal or remedial actions have not yet been initiated.
7	Grey	Areas that are not evaluated or require additional evaluation.



FINAL

REVISION	DATE	DESCRIPTION	BY	Woodward-Clyde
0	10/28/96	FINAL	BO/ CB	SENECA ARMY DEPOT ACTIVITY, NEW YORK
DISPOSAL AND REUSE MAP				